



WISCONSIN ALLIANCE FOR
INFANT MENTAL HEALTH

— Early Relationships Matter —



WI-AIMH

Annual Report 2022

Our vision

All Wisconsin infants and young children will reach their fullest potential through nurturing and consistent relationships within the context of family, community, and culture.

Our mission

WI-AIMH strives to promote infant mental health through building awareness, promoting professional capacity, fostering partnerships and supporting policies which are in the best interest of infants, young children and their families.



www.wiaimh.org



6213 Middleton Springs Drive, Suite 204
Middleton, WI 53562

RESPONDING TO NEED

Message from the Executive Director

Lana Shklyar Nenide



Year 2022 was a monumental one in our organizational development. We were able to resume in-person meetings and trainings. One of the highlights of the year was our state conference and the ability to celebrate WI-AIMH's twenty-first birthday together at the beautiful Osthoff Resort. This first "in-person" conference was memorable and important and we are grateful so many of you came. You honored us with your presence and attention. We also appreciate those who were not able to join in person for a variety of reasons and we did our best to accommodate you via streaming services and supports. We are committed to continuing to provide opportunities that allow professionals across the state to benefit from deep and meaningful professional development.

As we begin to emerge from three very long years of the COVID-19 pandemic, I want to acknowledge the trauma we experienced as individuals, families, communities, and as a world. This is especially true for infants and toddlers who were denied many normative developmental opportunities over a significant period of time. Think what three years means for a baby or a toddler - that is their entire life...

We already know that youth and adult mental health has been significantly impacted by COVID-19. We can state with complete certainty that the pandemic has left a negative impact on the wellbeing of our youngest, too.



To address the increased needs of infants and young children and to offer additional supports to their caregivers, WI-AIMH successfully applied for a grant that will allow us, in collaboration with many partners, to build a system for infant and early childhood mental health consultation. We believe that this relational approach will bring real support to communities around the state.

As WI-AIMH moves forward, we will continue to keep in mind that the ripples of the pandemic will be experienced for years to come, and we remain committed to supporting professionals across disciplines who work so diligently to meet the needs of infants, young children, and their families.

Warmest regards,

A handwritten signature in black ink, which appears to read "Lana Shklyar Nenide". The signature is fluid and cursive.

Lana

HIGHLIGHTS

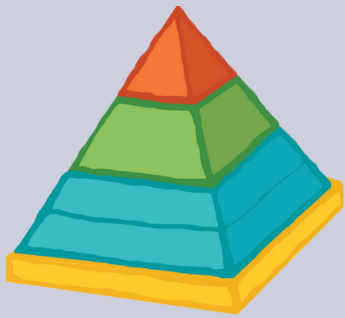
Wisconsin Infant and Early Childhood Mental Health Conference



More than 300 people joined us for our first in-person Wisconsin Infant and Early Childhood Mental Health Conference since 2019, and an additional 128 people joined selected sessions via live streaming. A highlight of the conference was the captivating keynote address by Dr. Sagashus T. Levingston. We all were inspired, informed, and invigorated to continue our important work.



Wisconsin Pyramid Model



The Pyramid Model team worked tirelessly to support healthy social and emotional development and overall well-being of our infants, toddlers, preschoolers, and those who take care of them. We've expanded training and outreach to pre-service folks, created, revised and launched training in several content areas, and continued to collaborate with statewide partners around social-emotional learning and recognition for exemplar Early Care and Education programs. 756 practitioners attended Pyramid Model trainings and more than 1,000 parents/family members attended Positive Solutions for Families trainings.

Infant Mental Health Endorsement

In 2022, we passed the 100 mark and saw a record number of Wisconsin professionals earn Infant Mental Health-Endorsement® for Culturally Sensitive, Relationship-Focused Practice Promoting Infant Mental Health. We began laying the foundation to expand Endorsement® and we are thrilled to be able to offer Early Childhood Mental Health Endorsement® in 2023 for professionals who work with children ages three to five.

Reflective Supervision Learning Collaborative

WI-AIMH kicked off the 5th cohort of the Reflective Supervision Learning Collaborative (RSLC) for 15 infant and early childhood professionals this year. We went back to in-person training after a couple of years of virtual and continue to explore how to best support professionals in creating space and opportunity for reflection in their personal and professional lives.

The Power of Connection

We were excited to launch our new web experience *The Power of Connection: Discover the Magic!* This interactive website for families and caregivers explores the emotional life of babies, toddlers, and young children with beautiful photos and Emmy nominated videos. It offers rich content about child development and social and emotional learning.



Pathways for Mental Health Clinicians

For the second consecutive year, we developed and coordinated the Pathways Project for Clinicians, providing training, support and materials to clinicians who are beginning to include infant and early childhood mental health in their practices. A total of 392 training and activity slots were filled, with many clinicians being involved in opportunities which required significant time commitment.

Finances

2022 Donors

Therese Ahlers
 Amy Alt
 Sara Alvarez
 Betsy and Steve Anderson
 Alex Atterbury
 Mary Jo Baisch
 Jonathan Biatch
 Rebecca Cohen
 Annette Copa
 Michael Hoffman
 Richard Immler
 Micki & Mark Meier
 Lois Seefelt
 Lauren Shapiro
 Eileen Sperl
 Marcia Thompson
 Russel and Kathy Wortley
 Julia Yeary



We are grateful to the donors who honored the life and work of Donna Harris by contributing to the Donna Harris Memorial Scholarship Fund.

2022 Income

\$ in Thousands

Government Grants	\$ 1,115	60%
Direct Public Support	453	25%
Program Services	325	18%
Investment Loss	(47)	-3%
Total	\$ 1,847	100%

2022 Expenses

\$ in Thousands

Management and General	\$ 123	6%
Fundraising	1	0%
Program Services	1,788	94%
Total	\$ 1,912	100%

WI-AIMH is a member organization of:



WORLD ASSOCIATION FOR
 INFANT MENTAL HEALTH



Alliance for the Advancement of
 Infant Mental Health

Major Funders

Roots & Wings
 FOUNDATION

TIDES



Wisconsin Department of
 Children and Families



WISCONSIN DEPARTMENT
 of HEALTH SERVICES

Staff

Lana Shklyar Nenide, Executive Director
 Julie Betchkal, Wisconsin Pyramid Model Director
 Ashley Bowers, Infant Mental Health Manager
 Becky Buck/Rachel Siegersma, Northwest Region Pyramid Model Lead
 Sheila Dunlap, Office Coordinator, Eau Claire
 Jenny Durand, Southern Region Pyramid Model Lead
 Carrie Finkbiner, Infant Mental Health Program Lead
 Tina Hogle, Communications & Outreach Manager
 Delechia Johnson, Southeast Region Pyramid Model Lead
 Marisa Kahler, Pyramid Model Data Manager
 Sarah Katzman, Middleton Office Coordinator
 Kathie Magin, Director of Operations
 Tina Ruckdashel, Northeast Region Pyramid Model Lead

Board of Directors

Heather Jordan, President
 Michael Hoffman, Vice President
 Eric Golueke, Treasurer
 Andrew DeClercq, Secretary
 Romilia Schlueter
 Emilie Braunel
 Connie Dunlap