

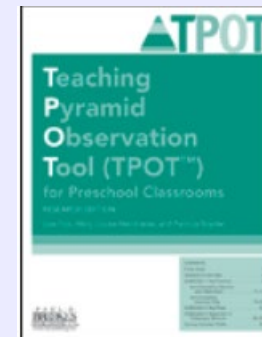
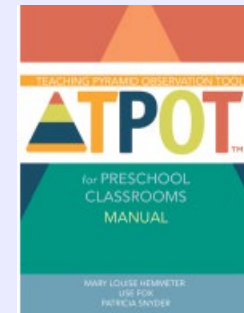
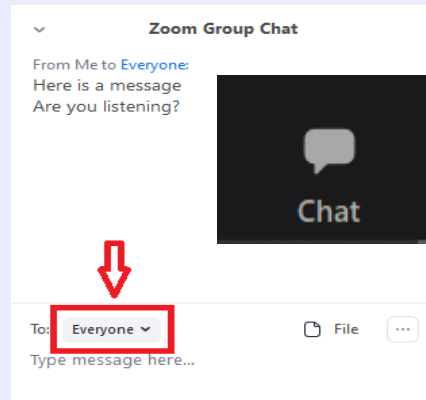
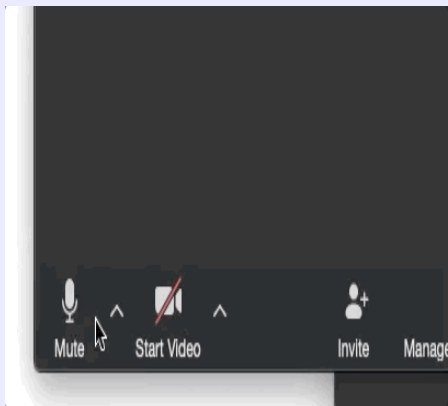


WELCOME to COACHES CONNECTION

BE HELPFUL:

1. In Chat box, tell us what program you are with and do a feelings check in.
2. Have your TPOT manual and a scoring sheet available

BE KIND: Mute Microphone



Greetings | Saludos



smile
sonríe



put hands on your heart
pon las manos
sobre tu corazón



give an air hug
da un abrazo de aire



give a superhero salute
da una saludo
de superhéroe



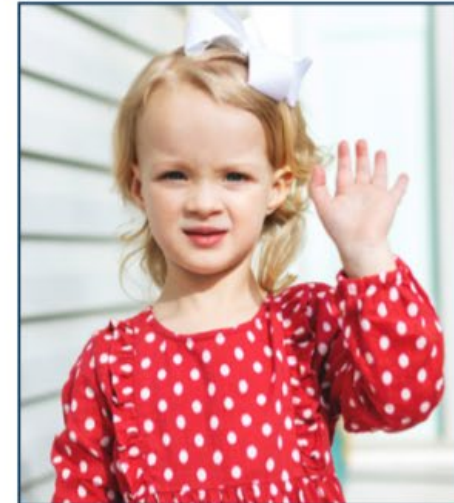
give a thumbs up
da un pulgar hacia arriba



do a happy dance
haz un baile feliz



elbow bump
choca los codos



wave hello
saluda con la mano



Our Time Together:



Problem of the Day: “Scoring the TPOT with the Pandemic in Mind”



Learning Opportunity: Break out sessions-Analyzing Items and Indicators that Pandemic Practices and Safety Measures MAY Impact



Resources and Upcoming Events





Will Pandemic practices and safety measures effect TPOT scoring?

Why Are We Addressing this “Problem”?

- Answer questions today you may have already been wondering about
- Confidence in Scoring
- Consistency





Think of Some Solutions

Break Out Group Work

- Each group will have a leader/note taker
- Discuss each Indicator for the two Key Practice Items you are assigned
- Make notes on concerns or considerations for scoring these indicators during COVID requirements
- We will come back together after the break out to finish up
- All information will be shared on the WI AIMH website under Coaches Connection

Let's Practice Together



Final Tasks:

- Highlights from each group(if time)
- What about TPITOS?
 - If you would like to do the same thing with the TPITOS please leave a message in the chat box and we will facilitate another group



Resources for Pyramid Model Coaches



SUPPORT FOR THE WORK

[Evidence: What We Know About Practice-based Coaching](#)

[Practice-based Coaching: Top 10 Tips for Coaches](#)



SAMPLE COACHING AGREEMENTS

[NCPMI teacher - coach agreement](#)

[PBC sample coaching agreements](#)

[Coaching Corner sample coaching agreement](#)

[Coach-Coachee agreement](#)

Helping Children Understand Emotions While Wearing a Mask

https://challengingbehavior.cbcs.usf.edu/docs/Wearing-Masks_Tipsheet.pdf

(Great resource for ITEM 10 Teaching Children to Express Emotions-TPOT)



Connection & Learning Opportunities



Continue to join us on the 2nd Thursday of each month

- **Nov 12, 2020**
- Dec 10, 2020
- Jan 14, 2021
- Feb 11, 2021
- March 11, 2021
- April 8, 2021
- May 13, 2021



Wisconsin Infant and Early Childhood Mental Health Conference
October 19-21, 2020 (a virtual event)

Registration for the 2020 Wisconsin Infant and Early Childhood Mental Health Conference is OPEN!

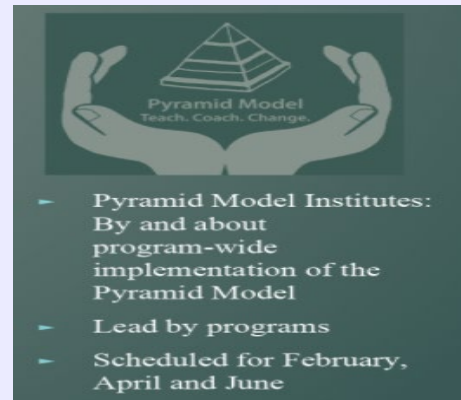
Click here to register for the Conference

Featuring a keynote presentation by Dr. Barbara Stroud
Every Child: Holding Stories of Inequity from a Compassionate Lens

Conference Home Sessions Presenters

See you in October!
www.wiaimh.org/conference

Register with Access Code
PM 2020



Pyramid Model
Teach. Coach. Change.

- Pyramid Model Institutes: By and about program-wide implementation of the Pyramid Model
- Lead by programs
- Scheduled for February, April and June

Trainings



Practiced-Based Coaching
Dec. 1&2; 8&9
12:30-2:30



TPOT & TPITOS Training
Nov. 9 & 10, 2020



Positive Solutions for Families
Facilitator Training

Wisconsin
CSEFEL Pyramid Model
Partnership

Promoting Social Emotional Competence in Wisconsin's Young Children

Center on the Social and Emotional Foundations for Early Learning

Pos Solutions for Families
Facilitator Training
November 16 & 18
12:30-2:00

